

HANSEN COURT

1200 wide concrete footpath in accordance with GCCC guidelines

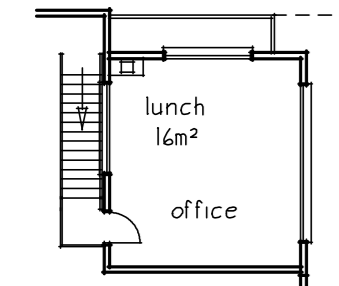
concrete driveway to crossover in accordance with GCCC guidelines Std dug No 05.02.301

VACANT ALLOTMENT

2m high colourbond fence between units

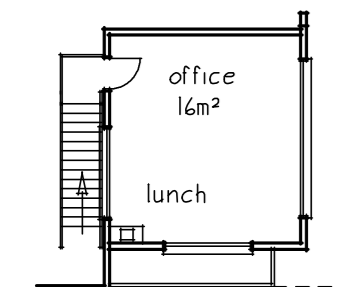
2m high chain wire fence to boundary to end unit II

FIRST FLOOR UNIT II 29m²

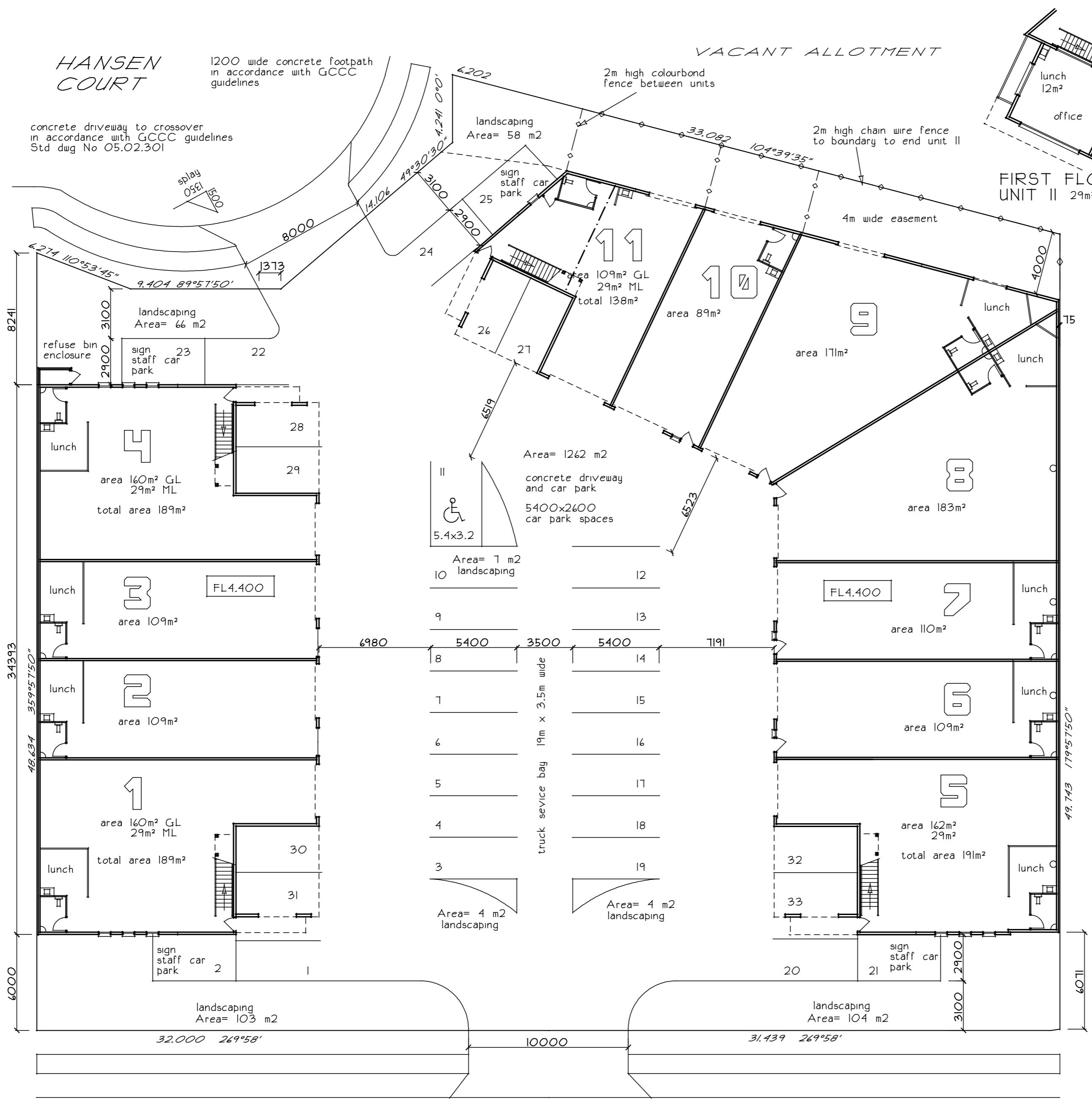


FIRST FLOOR UNIT 4 29m²

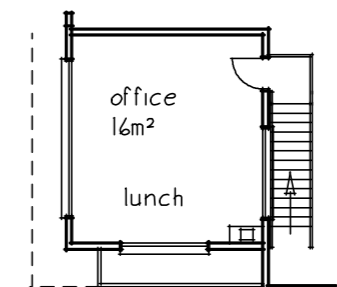
VACANT ALLOTMENT
BUILDING ONE
area 594m²



FIRST FLOOR UNIT I 29m²



BUILDING TWO
area 991m²
VACANT ALLOTMENT



FIRST FLOOR UNIT 5 29m²

SITE ANALYSIS

Lots 8 & 9 in process of being amalgamated

AREA OF SITE	3345m ²
AREA OF BUILDING TO GROUND FLOOR	1471m ²
FIRST FLOOR AREA Office are less than 10% of TUA	116m ²
TOTAL AREA	1587m ²
COVERAGE	47.45%

CAR PARK SPACES PROVIDED 33

LANDSCAPING PROVIDED 346m²

PROPERTY DESCRIPTION
lots 8 & 9 SP 116347
formerly part of lot 66 RP 220698
PARISH OF COOMERA
COUNTY OF WARD

1200 wide concrete footpath in accordance with GCCC guidelines

concrete driveway to crossover in accordance with GCCC guidelines Std dug No 05.02.301

GATEWAY COURT

READ IN CONJUNCTION WITH DRAWINGS 1 TO

MEMBER

building designers association of queensland inc

HOOKER DESIGN CONSULTANTS
44 Sunshine Pde Miami 4220
Tele 0755762108 fax 55687160
John Hooker licensed under the QBSA
Act Building Design-Medium rise
Hydraulic services design rest.-1470

DATE 28.12.05 SCALE 1 : 200
C/Fbail89coom1 DWG No 25835

PROPOSED NEW MARINE INDUSTRY WAREHOUSE UNITS FOR COLDGOLD ENTERPRISES PTY LTD AT LOTS 8 & 9 GATEWAY COURT COOMERA of

SHEET

SITE PLAN